

# Cl-O (Chlorine-Oxygen)

H. Okamoto

No information was given on the Cl-O system in [Massalski2].

The Cl-O phase diagram shown in Fig. 1 was determined by [1970Kep] by measuring the freezing point of mixed liquids of Cl<sub>2</sub> and ClO<sub>2</sub>.

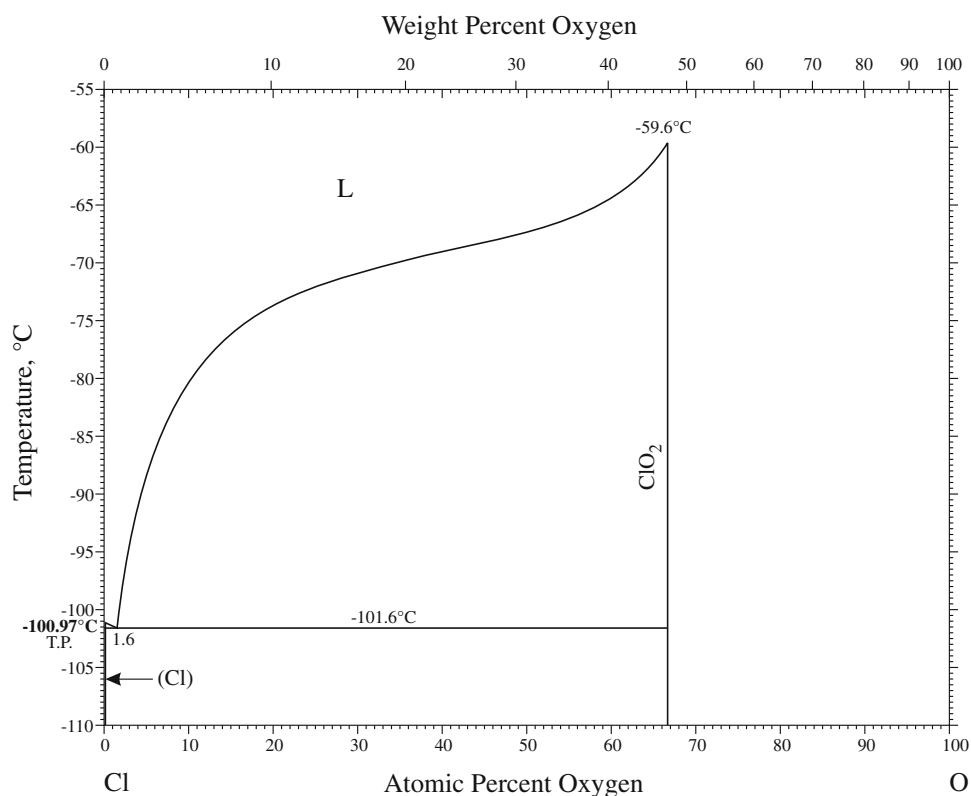
Table 1 shows Cl-O crystal structure data. No information is available on solid ClO<sub>2</sub>.

## Reference

**1970Kep:** J. Kepinski and K. Kalucki, Solid-Liquid Equilibrium in the System Chlorine Dioxide-Chlorine, *Can. J. Chem.*, 1970, 48, p 2320-2323

**Table 1** Cl-O crystal structure data

Phase	Composition, at.% O	Pearson symbol	Space group	Strukturbericht designation	Prototype
(Cl)	0	<i>oC8</i>	<i>Cmca</i>	A14	I
ClO <sub>2</sub>	66.7	...	...	...	...



**Fig. 1** Cl-O phase diagram